

# Overview of seasonal sand level changes on southern California beaches

By

M.L. Yates, R.T. Guza, W.C. O'Reilly, and R.J. Seymour

*myates@coast.ucsd.edu*

*Scripps Institution of Oceanography*

*University of California — San Diego*

*9500 Gilman Drive, La Jolla, CA 92093-0209*

## ABSTRACT

The magnitude of seasonal shoreline fluctuations (the difference between winter and summer subaerial beach width), surveyed repeatedly with airborne LIDAR, varies considerably along 80 km of southern California coastline. The seasonally variable wave field forces seasonal sand level changes, but the alongshore variation of the magnitude of seasonal sand level changes and wave energy are not correlated. For example, along a 20-km reach with little alongshore variation in the wave field, seasonal cross-shore excursions of the shoreline vary by a factor of four. The magnitude of the seasonal beach width changes appears to be influenced by the cross-shore sand grain size difference and may also be affected by alongshore variations in cobbles, exposed bedrock, cliff inputs, and offshore sand supply. A simple equilibrium beach change model, developed using additional *in situ* surveys at Torrey Pines Beach to tune free parameter values, accurately reproduces the observed seasonal fluctuations in beach width. Ongoing work includes empirically relating the equilibrium model parameters to geologic factors.

Beach erosion, already threatening much of the U.S. coastline, may increase if sea level rise continues, or if storm frequency or intensity increases. Beach erosion jeopardizes coastal infrastructure and reduces beach tourism. Coastal recreation expenditures in San Diego County beach communities reached \$1.7 billion in 1997 (CRA 1997), but beachgoers indicated they would decrease beach attendance by about 25% if beaches were half as wide or twice as crowded (CDBW & SCC 2002).

The United States Geological Survey (USGS) National Assessment of Shoreline Change concluded that 67% of southern California shoreline between Point La Jolla and Dana Point was eroding between 1972 and 1998 (Hapke *et al.* 2006). The design of beach retention and nourishment programs, which are needed to meet recreation demands and protect shoreline and sea cliff property, can be improved by understanding the mechanisms controlling beach change.

Ground-based kinematic Global Positioning System (GPS) surveys (Morton *et al.* 1993) enable sand level change monitoring over several kilometers on individual beaches. Airborne light de-

tecting and ranging (LIDAR) systems (Brock *et al.* 2002) can sample hundreds of kilometers with high spatial resolution. Repeated LIDAR surveys are a unique resource for studying large-scale sand level change, but frequent LIDAR surveys are expensive. In this study, biannual LIDAR flights were supplemented with monthly or more frequent *in situ* surveys at selected focus sites to increase temporal resolution.

In southern California, seasonal fluctuations in wave energy cause large seasonal cross-shore fluxes of sediment. Winter storms erode the shoreline, forming an offshore bar, while low-energy summer waves cause onshore migration of the bar and shoreline accretion, as observed at Torrey Pines Beach (Shepard 1950; Winant *et al.* 1975; Aubrey 1979). Using LIDAR and *in situ* measurements to quantify sand level variability and a regional network of directional wave buoys to monitor wave conditions, we show that the magnitude of sand level change varies along the southern California shoreline and that alongshore variations are not well correlated with alongshore variations in seasonal wave energy.

In other regions of the world, the underlying geology (McNinch 2004),

## ADDITIONAL KEYWORDS:

Shoreline change, seasonal cycle, LIDAR, wave measurements, sand grain size, geologic factors, Torrey Pines Beach, equilibrium model

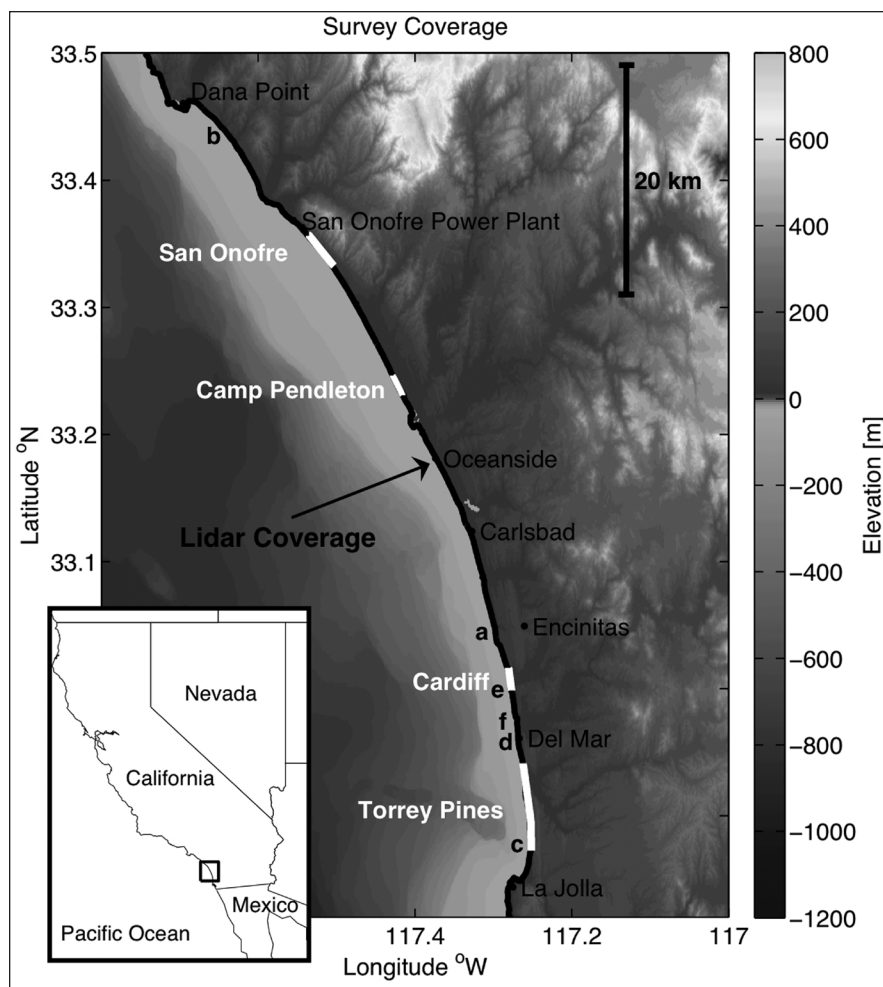
*Manuscript submitted 15 September 2008, revised and accepted 8 December 2008.*

nature and source of beach sand (Jackson *et al.* 2005), and offshore sediment availability (Miselis and McNinch 2006) affect beach morphology. Recent work in southern California (Hogarth *et al.* 2007) explores the offshore geology in depths as shallow as 10 m, but the offshore geology has not yet been related to shoreline beach morphology. We show that the magnitude of seasonal shoreline change in southern California likely depends on swash and surfzone geology, as well as on wave energy.

Many authors have suggested that beaches form stable equilibrium profiles for given wave and sand characteristics (Edelman 1968; Swart 1974; Dean 1977). The equilibrium beach concept is demonstrated with sand level and wave observations at Torrey Pines and incorporated in a simple shoreline change model that assumes cross-shore transport is dominant. Future work aims to relate the values of the free parameters in the shoreline change model to sand characteristics and to include the effect of alongshore sand transport.

## SAND LEVEL MEASUREMENTS

Ten airborne LIDAR surveys measured sand levels along 80 km of southern California coastline between May 2002 and March 2006 (Figure 1). The processed LIDAR data includes the subaerial beach, spanning from the backbeach (e.g. cliffs, seawall) to the waterline, where an algorithm using the tide level and wave



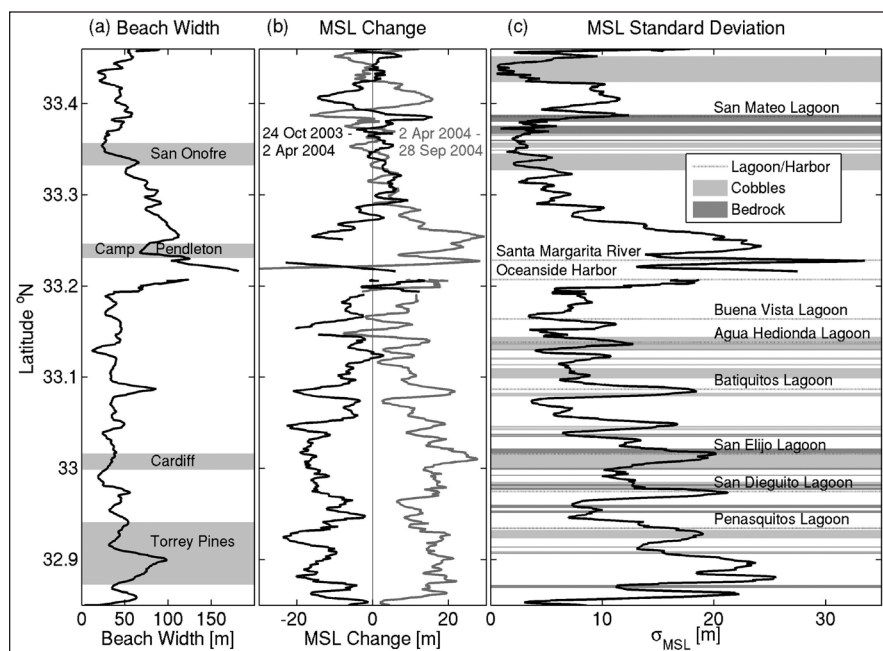
**Figure 1.** LIDAR (black lines) and *in situ* (white lines) survey observations are shown along the southern California coastline, with map location in inset. The black letters (a-f) locate the images in Figure 5.

height removed water data points (Yates *et al.* 2008). In addition to these twice-yearly, high-spatial resolution surveys, sand levels were measured at four focus sites within this alongshore span (Figure 1, Table 1). Monthly or more frequent *in situ* surveys spanned from the backbeach to the waterline using a GPS-equipped all-terrain vehicle (ATV). Three to four times yearly full bathymetry surveys to approximately 10 m depth were obtained using a GPS-equipped ATV, hand-pushed cart, and personal watercraft with sonar. LIDAR and *in situ* surveys both have estimated vertical root-mean-square (RMS) errors of about 15 cm.

### SAND LEVEL CHANGES

Changes in the location of depth contours are dominated by the seasonal cycle. The width of the subaerial beach available for recreation (Figure 2a), characterized by the location of the Mean Sea Level (MSL) contour, narrows (erodes) in winter and widens (accreted) in summer (e.g. dark and light curves, respectively, in Figure 2b), as observed previously at Torrey Pines beach (e.g. Winant *et al.* [1975]). The magnitude of the seasonal cycle varies significantly over the 80 km surveyed reach. The standard deviation of MSL position or beach width ( $\sigma_{\text{MSL}}$ , roughly the RMS seasonal cycle change amplitude, Figure 2c), ranges from about 20 m at Torrey Pines (32.9°N) and Camp Pendleton (33.22°N), to less than 5 m at San Onofre (33.36°N). A typical fall-spring fluctuation, about two times the MSL standard deviation, is often a significant fraction of the total beach width, and in some locations the winter MSL contour nearly reaches the backbeach.

To resolve temporally the seasonal cycles observed with biannual LIDAR, monthly exposed beach surveys and three to four times yearly full bathymetry surveys were acquired for more than a year at selected focus sites (Figure 1, Table 1). Monthly MSL time series, averaged along a 500-m alongshore span (insets, Figure 3), confirm that the biannual LIDAR observations (Figure 2) are representative of winter and summer beach width extrema. Monthly MSL position



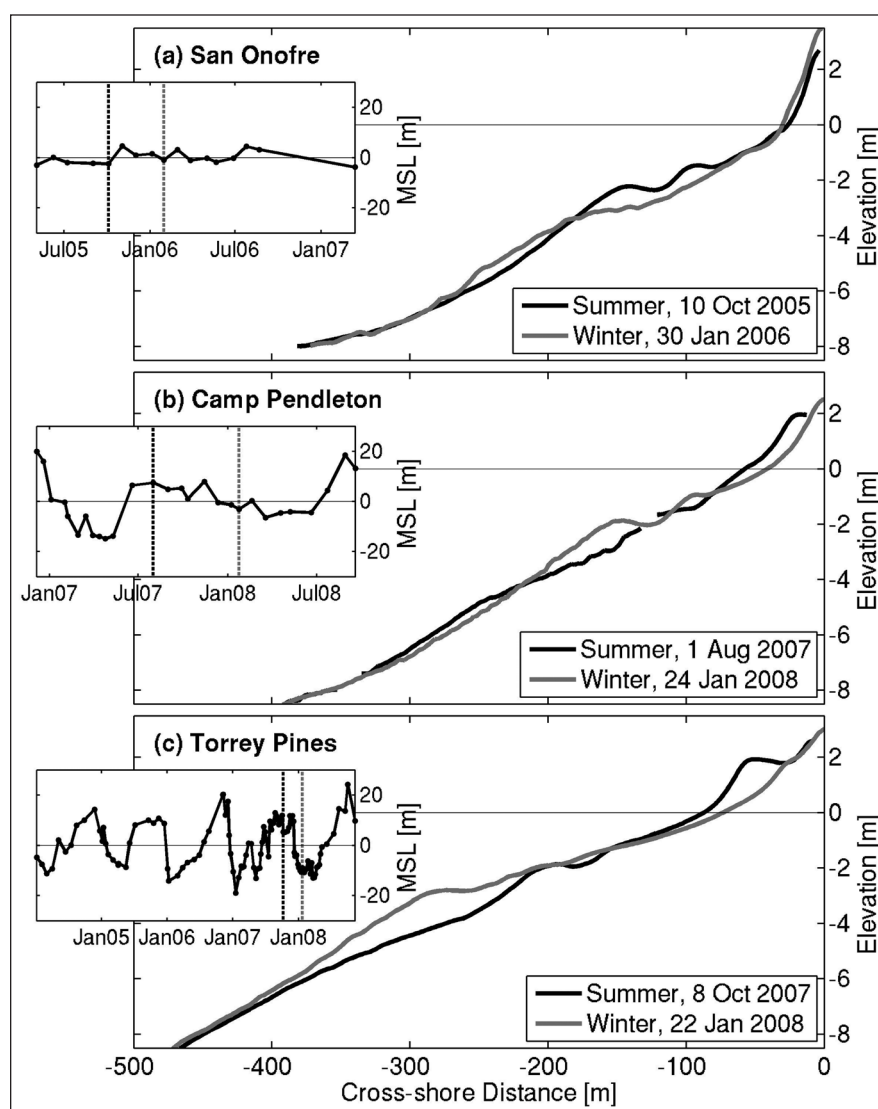
**Figure 2.** LIDAR-derived beach characteristics versus alongshore location: (a) mean (10 surveys) subaerial beach width, from the backbeach (e.g. dunes, cliffs) to the MSL contour (focus sites are shaded), (b) example MSL changes: winter erosion (black, 24 October 2003 to 2 April 2004) and summer accretion (gray, 2 April 2004 to 28 September 2004), and (c) MSL contour location standard deviation  $\sigma_{\text{MSL}}$  (seasonal cycle change amplitude). Background shading and horizontal lines indicate beach geology (see legend).

moves less than 5 m at San Onofre (inset, Figure 3a) and more than 20 m seasonally at Camp Pendleton and Torrey Pines (inset, Figure 3b,c). The shoreline at San Onofre is stable, not showing a seasonal cycle. Cross-shore profiles, extending from -9 to +3 m elevation (Figure 3), sampled at times of approximate beach width extrema, show that although the beach face at San Onofre is stable, the seasonal cross-shore displacements of contours deeper than about -1 m are as large as 30 m (Figure 3a), comparable to deeper water contours at Camp Pendleton and Torrey Pines (Figure 3b,c). The *in situ* observations show large seasonal fluctuations of underwater contours at all three focus sites and verify the LIDAR observations of a stable beach at San Onofre and large seasonal shoreline changes at Torrey Pines and Camp Pendleton.

### WAVE ESTIMATES

Hourly wave spectra are estimated every 100 m alongshore on the 10 m depth contour using a spectral refraction wave model initialized with buoy observations both seaward and shoreward of the Channel Islands (O'Reilly *et al.* 1993; O'Reilly and Guza 1998). The Channel Islands and variable coastline orientation create alongshore variability in seasonal wave fluctuations (Pawka 1983). The average significant wave height is larger in winter (December to April) than in summer (May to November) along the entire coastline, but the seasonal difference decreases from south to north, with a pronounced change around 33.1°N latitude (Figure 4a). Additionally, large wave events are more frequent in the southern region, again with a change around 33.1°N latitude (Figure 4b). The incoming wave direction of storms varies seasonally, with larger winter swell arriving from the Northwest Pacific and generally smaller summer swell arriving from the South Pacific.

Large seasonal sand level fluctuations occur even on relatively long, straight beaches and are believed to be caused primarily by seasonal variations in wave height and the associated cross-shore transport (Aubrey *et al.* 1980). However, the magnitude of seasonal beach width changes ( $\sigma_{MSL}$ , Figure 2c) has more alongshore variation than the seasonal standard deviation from the mean wave height (Figure 4a), and these alongshore series are not correlated ( $R^2 = 0.15$ ). Correlations were also low between



**Figure 3. Summer (black) and winter (gray) cross-shore depth profiles at: (a) San Onofre, (b) Camp Pendleton, and (c) Torrey Pines. Insets show MSL position versus time. Black and gray vertical dashed lines indicate summer and winter profile dates, respectively.**

the magnitude of seasonal beach width changes ( $\sigma_{MSL}$ , Figure 2c) and the frequency of large significant wave height events (Figure 4b).

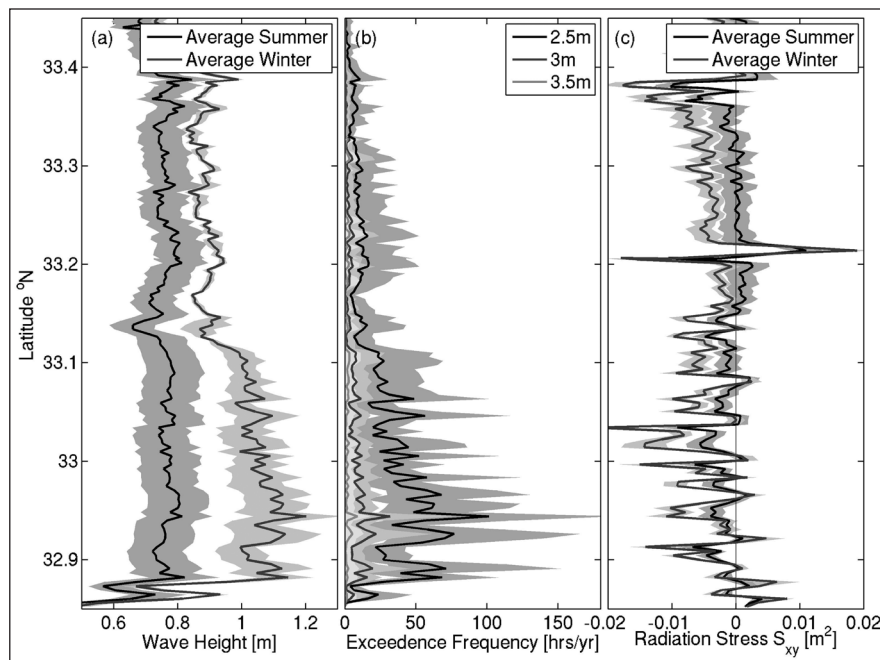
Alongshore gradients in alongshore sediment flux, or the so-called divergence of the drift, can also cause accretion and erosion (Kamphius 1991). The coastline is tilted northwestward (Figure 1), so the radiation stress component  $S_{xy}$ , which forces alongshore currents (Longuet-Higgins 1970), is usually directed southward (Figure 4c). Wave seasonal variability affects the magnitude of the seasonal  $S_{xy}$ , but alongshore gradients of  $S_{xy}$  are qualitatively similar in summer and winter, and the net alongshore transport does not have significant seasonal variation. Although quantitative analysis is needed, it seems unlikely that alongshore

gradients in wave-driven sediment flux cause the observed seasonal alongshore variation in MSL displacement.

### BEACH GEOLOGY

Visual surveys determined the location of cobbles, jetties, exposed bedrock, and lagoons. Some cobbled areas (light shading in Figure 2c) show reduced sand level variability, consistent with suggestions that cobbles armor the shoreline (Carter and Orford 1984; Sherman 1991). However, cobble coverage is both variable and difficult to quantify, ranging from dense cobble layers completely covering the sand (Figure 5a), to small, intermittent piles of cobbles spaced every ~50-100 m (Figure 5b), to cobble cusps located only at the backbeach (not shown). While many beaches are sandy (Figure 5c), the depth of the sand layer





**Figure 4. Seven-year (2001-2007) average wave properties versus alongshore position: (a) average summer (May to November) and winter (December to April) wave height, (b) average frequency (number of hours per year) that large (2.5-3.5 m) significant wave heights are exceeded, and (c) average summer and winter alongshore radiation stress component,  $S_{xy}$ . Shading shows the range of mean values in the record.**

is often unknown. In some locations, the sand layer has eroded away, exposing bedrock on the beach face (Figure 5d) or in the surf zone (Figure 5e). On beaches with limited sediment availability, bedrock (dark shading in Figure 2c) may be exposed in winter when the overlaying sand erodes from the beach face. Additionally, lagoon and river mouths may be a sand source or sink, affecting nearby sediment transport patterns (Figure 5f). MSL contour motions are often large near lagoon mouths (horizontal dotted lines in Figure 2c), perhaps owing to changes in lagoon mouth geometry. Non-sandy beach characteristics clearly contribute to alongshore variability in shoreline and

depth contour change, but the impact is not yet quantified.

In addition to visually characterizing beaches, sand grain size was measured approximately every 1 km along the visually located high tide line in spring 2006 (data courtesy of Jen Haas and Neal Driscoll), at three *in situ* survey sites in spring 2007, and between the Camp Pendleton and San Onofre sites in fall 2007 (Figure 6). Wright and Short (1984) characterized beaches into different morphodynamic states using the empirical parameter  $\Omega = H_b/w_s T$  (Dean 1973), where  $H_b$  is the breaking wave height,  $T$  is the wave period, and  $w_s$  is the sediment fall velocity, which is grain

size dependent. In addition, equilibrium profile response models have included scale parameters, depending on sand grain size (Dean 1977), suggesting that beach responsiveness to waves depends strongly on sand grain size.

The median grain size on the beach face increases from south to north along the 80 km survey region (Figure 6), perhaps with a break just south of the Camp Pendleton survey site near the Santa Margarita river mouth and the Oceanside harbor and jetty (identified in Figure 2c). Overall, sand grain size decreases with increasing wave height, opposing previous observations suggesting that grain size increases with increasing wave energy (Bascom 1951; Bryant 1982), but consistent with a northern source of large-grained material from the cliffs and littoral transport carrying finer grains southward (Self 1977; Nordstrom 1989). Cliff erosion may provide more than half of the beach sediments in the Oceanside littoral cell (Young and Ashford 2006), and cliff sediment median grain sizes are larger in the northern portion of the study region, between Oceanside and San Onofre, where beach grain sizes are also larger (Haas 2005). Mean beach slope, calculated at MSL  $\pm 0.5$  m also increases from south to north (Figure 6), with a break at the Oceanside Harbor, following the increase in sand grain size, as shown by Bascom (1951) and others.

In addition to the high tide samples, five samples (at approximately -3 m, -1 m, MSL, +1 m, and +2 m elevation) were taken on cross-shore transects at three survey sites and in the region between Camp Pendleton and San Onofre. At San Onofre, grains are coarser on the beach face than in the offshore, whereas the cross-shore sand size variation is weaker at Torrey Pines and Camp Pendleton (inset, Figure 6). A simple measure of cross-shore grain size difference ( $\alpha$ ) is

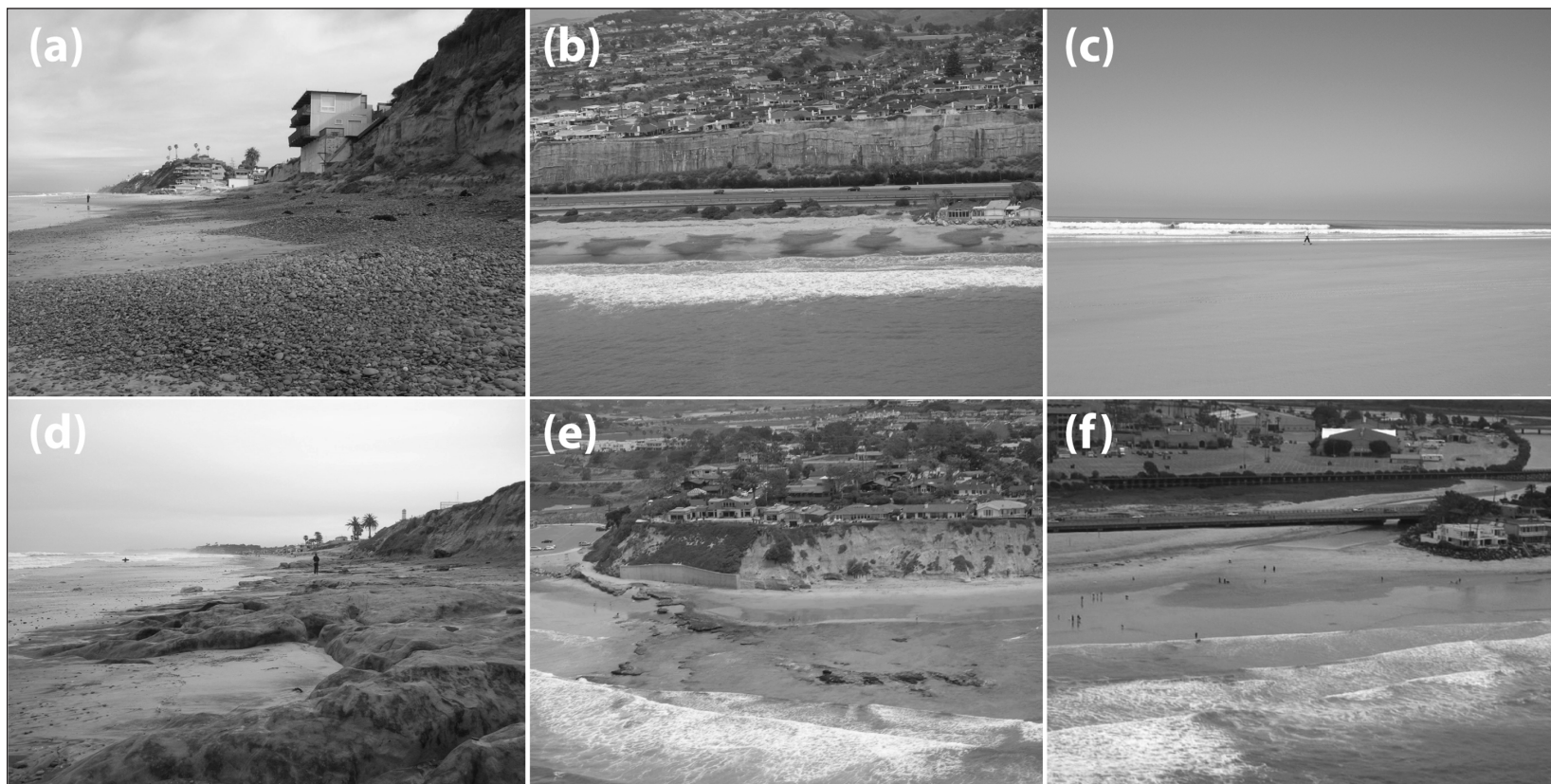
$$\alpha = \frac{D50_{\text{onshore}} - D50_{\text{offshore}}}{D50_{\text{onshore}} + D50_{\text{offshore}}} \quad \text{Eq. 1}$$

where  $D50_{\text{onshore}}$  is the average of the +1 m and +2 m beach face samples, and  $D50_{\text{offshore}}$  is the average of the -1 m and -3 m offshore samples (Figure 7b). When  $\alpha$  is approximately zero, onshore and offshore grain size are equal. When  $\alpha$  is approximately one, sand grains are much coarser onshore than offshore. Between Camp Pendleton and San Onofre, the northward decreasing trend in MSL vari-

**Table 1.**

**Focus site data collection.**

| Survey sites                      | Torrey Pines        | Cardiff            | Camp Pendleton      | San Onofre        |
|-----------------------------------|---------------------|--------------------|---------------------|-------------------|
| Alongshore span                   | 8 km                | 2 km               | 2.5 km              | 4 km              |
| Survey period                     | Feb. 2001-July 2008 | May 2007-July 2008 | Dec. 2006-July 2008 | May 2005-May 2006 |
| Exposed beach survey frequency    | Weekly-monthly      | Bi-weekly-monthly  | Monthly             | Monthly           |
| Number of exposed beach surveys   | 90                  | 27                 | 21                  | 13                |
| Number of full bathymetry surveys | 16                  | 7                  | 7                   | 4                 |



**Figure 5. Visually identified beach features at low tide: (a) thick piles of cobbles overlaying sand, (b) intermittent cobble piles, (c) wide sandy beach, (d) exposed bedrock on the beach face, (e) exposed bedrock in the inner surf zone, and (f) wide lagoon mouth. The image locations are shown in Figure 1.**

ability is significantly negatively correlated with  $\alpha$  (Figure 7c,  $R^2=0.54$ , significant at 95%), while the wave field shows little coherent alongshore variation (Figure 7a). We hypothesize that the alongshore variation in beach width change, without corresponding alongshore variation in waves, is related to alongshore variation in  $\alpha$  imposed by the sediment source location and characteristics. Alternatively, an unidentified mechanism, such as limited sand supply could be important. The extent of the offshore sand supply may also limit the volume of sand available to be transported cross-shore to the beach face or between underwater contours. Sand grain size distributions, underlying geology, sand layer depth, cliff contributions, and even inner shelf bathymetry are often unknown over large spatial scales. The limited geological data, and limited understanding of the effect of geologic factors on beach processes, allows only qualitative discussion of the influence of cobbles, exposed bedrock, lagoons, and sand grain size variability.

#### BEACH EQUILIBRIUM CHANGE MODEL

Seasonal sand level changes are caused by seasonal variations in waves,

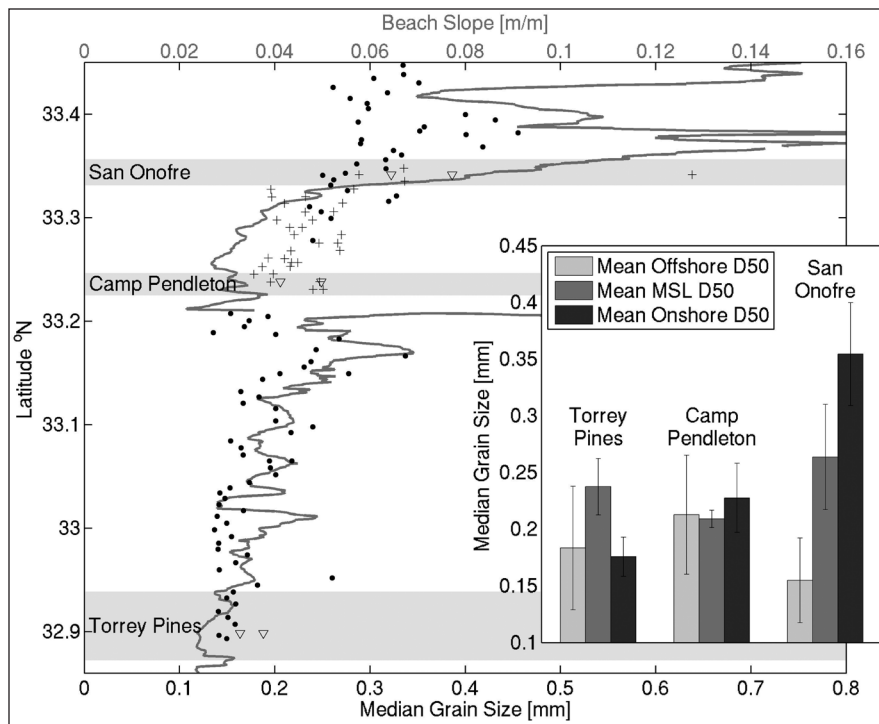
and many studies relate wave parameters to beach change (e.g. Miller and Dean 2006). Dean (1977) and many others have hypothesized that beaches change toward an equilibrium profile in response to a given wave forcing and that beach change depends on both the initial beach state and the wave field. The frequent measurements of sand levels at Torrey Pines are used to demonstrate the power of equilibrium beach change concepts. The model uses three observed quantities: initial beach state (location of the MSL contour, with the time mean removed), beach change (MSL contour movement) between two surveys, and average wave energy (spectral wave energy, units  $m^2$ ) between two surveys (Figure 8). A line of no change (black line, Figure 8), equivalent to the approximate equilibrium wave condition separating erosional (solid circles) and accretionary events (solid triangles) is determined from the data (by binning the data by MSL state, calculating the zero-crossing from erosion to accretion, and fitting a line through those points). As the beach transitions from an accreted state (positive MSL position; summer) to an eroded state (negative MSL position; winter), the equilibrium

wave energy increases: more wave energy is required to erode an already eroded beach. Wright *et al.* (1985) suggested that beach change is proportional to the difference from wave equilibrium (using Dean's parameter,  $\Omega$ , to describe the wave field) times the relative size of the wave event. Following their suggestion but instead using wave energy, the rate of beach width change ( $dS/dt$ , where  $S$  is MSL position) is:

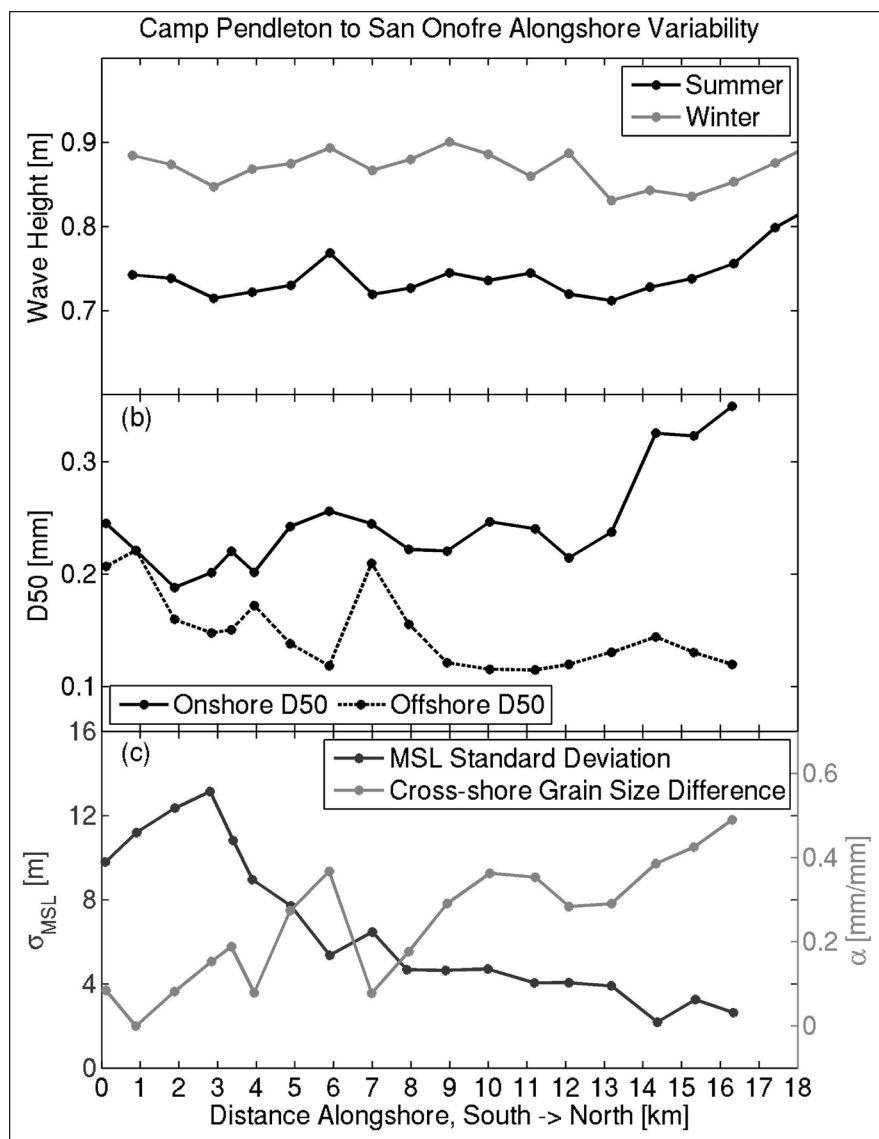
$$dS/dt = C^\pm E^{1/2} \Delta E \quad \text{Eq. 2}$$

where the  $\Delta E$  is the difference between the wave energy immediately seaward of the surf zone and the equilibrium wave energy [ $\Delta E = E - E_{eq}(S)$ ]. The model has four free parameters: two rate of change coefficients,  $C^+$  and  $C^-$  for accretion ( $\Delta E < 0$ ) and erosion ( $\Delta E \geq 0$ ), respectively, and two parameters that define the linear equilibrium wave condition as a function of the initial MSL position [ $E_{eq}(S) = aS + b$ ]. The rate of change coefficients [ $m s^{-1}/m^3$ ] define the magnitude of the MSL change rate for a given difference from wave energy equilibrium times the relative magnitude of the wave event ( $E^{1/2} \Delta E$ ). The observed equilibrium wave energy condition at Torrey Pines





**Figure 6. Median sand grain size [spring 2006, near the high tide waterline (dots); spring 2007, at +1 m and +2 m elevation (triangles); and fall 2007, at +1 m and +2 m elevation (plus signs)] and beach slope (gray line) versus alongshore location. The inset shows the cross-shore variability of the median grain size (D50) at three survey focus sites.**



was roughly linear (Figure 8), and a more complicated relationship with an exponential approach to equilibrium did not significantly improve model results. The model progresses hourly in time, calculating the difference between the current wave energy  $E$  and the equilibrium wave energy  $E_{eq}(S)$  for the current beach state at each time step. An optimization technique was used to search the parameter space for the values of the four free parameters minimizing the RMS difference between the observed and modeled MSL position [details in Yates *et al.*, submitted to *J. Geophys. Res.*].

The MSL observations, wave energy time series, and model output at one representative alongshore location at Torrey Pines are shown in Figure 9, where the RMS difference between the model and the observations is 4.0 m (model constants are:  $C^+ = -1.23$ ,  $C^- = -0.53 \text{ ms}^{-1}/\text{m}^3$ ,  $a = -0.0035 \text{ m}^2/\text{m}$ ,  $b = 0.12 \text{ m}^2$ ). The shoreline is eroded particularly rapidly by the first winter storm because the wave energy is significantly higher than the equilibrium wave energy  $E_{eq}(S)$  for the wide, accreted summer beach. Recovery rates during low wave energy are slower than typical erosion rates. Wave parameters including  $H$ ,  $\Omega$ ,  $\Omega^2$ , wave steepness, and the cross-shore radiation stress ( $S_{xx}$ ) were used in Eq. 2 instead of  $E$ , but model performance did not improve. After the model free parameters have been determined, the model can be used to predict future change given only the wave field (Yates *et al.* submitted to *J. Geophys. Res.*).

The model framework can be applied at other beaches; however, wave and

**Figure 7. Alongshore variation between Camp Pendleton (0-2 km) and San Onofre (14-18 km) survey sites: (a) seasonal significant wave height, (b) onshore and offshore median sand grain size (D50), and (c) MSL standard deviation ( $\sigma_{MSL}$ ) and cross-shore grain size difference ( $\alpha$ , Eq. 1).**

beach change observations are required to determine the model free parameters. The response coefficients can vary significantly between beaches. For example, at Camp Pendleton, the LIDAR observations and over a year of *in situ* observations show a seasonal cycle of MSL change with magnitude similar to Torrey Pines, but relatively low wave energy, similar to San Onofre. Different equilibrium conditions and/or rate of change coefficients at these sites may be caused by the different sediment characteristics. The frequency and duration of sand level surveys required to estimate model free parameter values are also being investigated (Yates *et al.* submitted to *J. Geophys. Res.*).

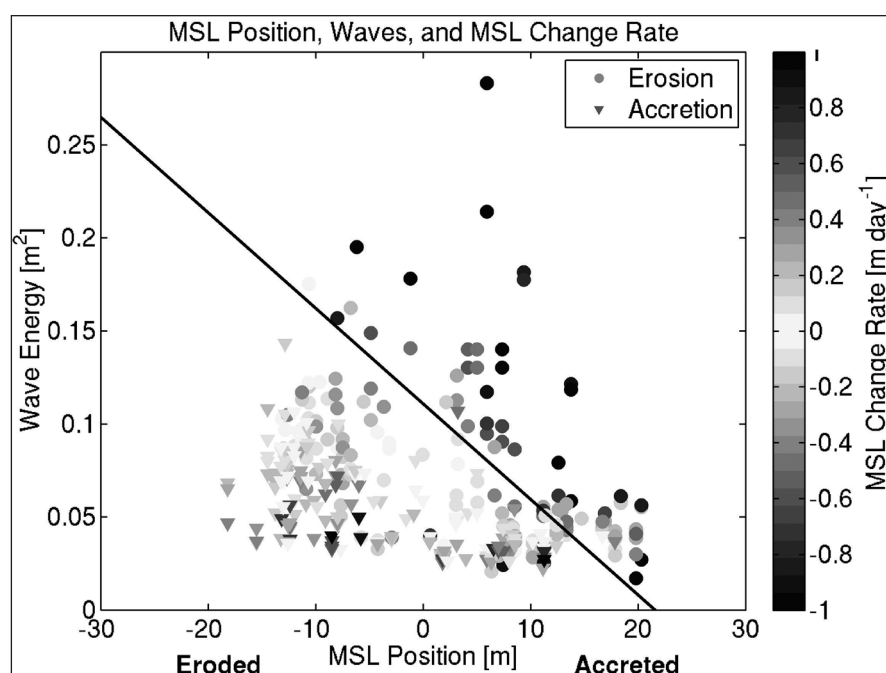
### CONCLUSIONS

The well-known seasonal cycle of sand level changes on southern California beaches (Shepard 1950) shows significant alongshore variability, which is not uniquely controlled by the along-shore variability in waves, suggesting that geological factors influence the seasonal cycle magnitude. Along a 17-km reach with little alongshore variability in waves, the difference between the onshore and offshore sand grain size is negatively correlated with the magnitude of shoreline change. For the same wave energy, shoreline change is less with large cross-shore variations in grain size, with relatively coarse sand at the shoreline. Additionally, exposed cobbles and bedrock, available sand supply, cliff sediment input, and lagoon mouths may have significant, but unquantified effects on seasonal morphological changes.

A simple equilibrium beach change model was developed and calibrated with observations at Torrey Pines and reproduced well the seasonal sand level fluctuations at Torrey Pines. The model can be applied at other locations, using observations of local sand levels and waves to find the model free parameters. Alongshore differences can be explored by comparing the relative magnitudes of the free parameters and their dependence on beach characteristics.

### ACKNOWLEDGEMENTS

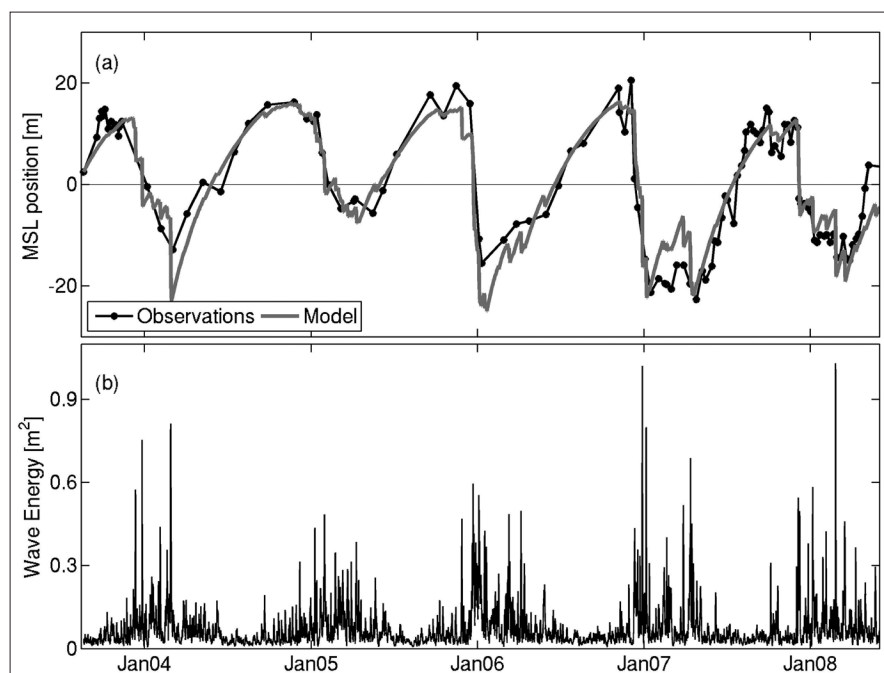
LIDAR surveys were sponsored by the U.S. Army Corps of Engineers and collected by Dr. Roberto Gutierrez of the University of Texas. Wave informa-



**Figure 8.** The observed MSL change rate between two surveys (circles are erosion, triangles are accretion, and shading shows magnitude) versus initial MSL position and the average wave energy between the two surveys. The solid black line approximates the equilibrium wave condition, which determines the wave energy that causes no further change in MSL position.

tion was provided by the Coastal Data Information Program and funded by the California Department of Boating and Waterways, and the U.S. Army Corps of Engineers. The *in situ* survey system

was constructed and operated by Brian Woodward, Bill Boyd, Dennis Darnell, Kent Smith, and Ian Nagy. Marissa Yates was partially supported by an NDSEG Fellowship.



**Figure 9.** (a) MSL position (mean removed) versus time: equilibrium model (gray) and observations (black, monthly for 2004-2007, weekly for 2008). RMS difference is ~4 m. (b) Wave energy versus time.

## REFERENCES

- Aubrey, D.G., 1979. "Seasonal patterns of onshore/offshore sediment movement." *J. Geophys. Res.*, 84, 6347-6354.
- Aubrey, D.G., D.L. Inman, and C.D. Winant 1980. "The statistical prediction of beach changes in southern California." *J. Geophys. Res.*, 85, 3264-3276.
- Bascom, 1951. "The relationship between sand size and beach-face slope." *Transactions, American Geophysical Union*, 32(6), 866-874.
- Brock, J., C. Wright, A. Sallenger, W. Krabill, and R. Swift 2002. "Basis and methods of NASA Airborne Topographic Mapper LIDAR surveys for coastal studies." *J. Coastal Res.*, 18, 1-13.
- Bryant, E., 1982. "Behavior of grain size characteristics on reflective and dissipative foreshores, Broken Bay, Australia." *J. Sediment. Petrol.*, 52(2), 431-450.
- California Department of Boating and Waterways and State Coastal Conservancy (CDBW & SCC), 2002. *California Beach Restoration Study*. Sacramento, California.
- California Resources Agency (CRA), 1997. *California's ocean resources: An agenda for the future*. Sacramento, CA: California Resources Agency.
- Carter, R.W.G. and J.D. Orford 1984. "Coarse clastic barrier beaches: A discussion of the distinctive dynamic and morphosedimentary characteristics." *Mar. Geol.*, 60, 377-389.
- Dean, R.G., 1973. "Heuristic models of sand transport in the surf zone." *Proc. Conference on Engineering Dynamics in the Surf Zone*, Sydney, N.S.W., 208-214.
- Dean, R.G., 1977. "Equilibrium beach profiles: U.S. Atlantic and Gulf coasts." Department of Civil Engineering, Ocean Engineering Report No. 12, University of Delaware, Newark, DE.
- Edelman, T., 1968. "Dune erosion during storm conditions." *Proc. 11<sup>th</sup> Conf. Coast. Eng.*, London, pp.719-722.
- Haas, J.K., 2005. "Grain size and mineralogical characteristics of beach sand in the Oceanside Littoral, Southern California: implications for sediment provenance," M.S. thesis, 76 pp., University of California, San Diego.
- Hapke, C.J., D. Reid, B.M. Richmond, P. Ruggiero, and J. List 2006. *National assessment of shoreline change: Part 3: Historical shoreline changes and associated coastal land loss along the sandy shorelines of the California coast*: U.S. Geological Survey Open-file Report 2006-1219.
- Hogarth, L.J., J. Babcock, N.W. Driscoll, N. Le Dantec, J.K. Haas, D.L. Inman, and P.M. Masters 2007. "Long-term tectonic control on Holocene shelf sedimentation offshore La Jolla, California." *Geol.*, 35(3), 275-278, doi: 10.1130/G23234A.1.
- Jackson, D.W.T., J.A.G. Cooper, and L. Del Rio 2005. "Geological control of beach morphodynamic state." *Mar. Geol.*, 216, 297-314.
- Kamphuis, J.W., 1991. "Alongshore Sediment Transport Rate." *J. Waterw., Port, Coast. Ocean Eng.*, 117(6), 624-640.
- Longuet-Higgins, M.S., 1970. "Longshore currents generated by obliquely incident sea waves, I." *J. Geophys. Res.*, 75(33), 6778-6789.
- McNinch, J.E., 2004. "Geologic control in the nearshore: shore-oblique sandbars and shoreline erosion hotspots, Mid-Atlantic Bight, USA." *Mar. Geol.*, 211, 121-144.
- Miller, J.K. and R.G. Dean 2006. "Shoreline variability via empirical orthogonal function analysis: Part II relationship to nearshore conditions." *Coast. Eng.*, 54, 133-150.
- Miselis, J.L., and J.E. McNinch 2006. "Calculating shoreline erosion potential using nearshore stratigraphy and sediment volume: Outer Banks, North Carolina." *J. Geophys. Res.*, 111, F02019.
- Morton, R., M. Leach, J. Paine, and M. Cardoza 1993. "Monitoring beach changes using GPS surveying techniques." *J. Coastal Res.*, 9, 702-720.
- Nordstrom, K.F., 1989. "Downdrift coarsening of beach foreshore sediments at tidal inlets: An example from the coast of New Jersey." *Earth Surf. Proc. Land.*, 14, 691-701.
- O'Reilly, W.C. and R.T. Guza 1998. "Assimilating coastal wave observations in regional swell predictions. Part I: Inverse methods." *J. Phys. Oceanogr.*, 28, 679-691.
- O'Reilly, W.C., R.J. Seymour, R.T. Guza, and D. Castel 1993. "Wave monitoring in the Southern California Bight." In: *Proc. 2<sup>nd</sup> International Symposium Ocean Wave Measurement and Analysis*, New Orleans, LA, 448-457.
- Pawka, S.S., 1983. "Island shadows in wave directional spectra." *J. Geophys. Res.*, 88, 2571-2591.
- Self, R.P., 1977. "Longshore variation in beach sands, Nautla area, Veracruz, Mexico." *J. Sedimentary. Petrol.*, 47, 1437-1443.
- Shepard, F.P., 1950. "Beach cycles in southern California, Tech." Memo 20, Beach Erosion Board, U.S. Army Corps of Engineers, Washington, D.C., 26pp.
- Sherman, D.J., 1991. "Gravel beaches." *National Geographic Research and Exploration*, 7, 442-452.
- Swart, D.H., 1974. "Offshore sediment transport and equilibrium beach profiles." Publ. No. 131, Delft Hydraulics Lab., Delft Univ. Technol.
- Winant, C.D., D.L. Inman, and C.E. Nordstrom 1975. "Description of Seasonal Beach Changes Using Empirical Eigenfunctions." *J. Geophys. Res.*, 80, 1979-1986.
- Wright, L.D., and A.D. Short 1984. "Morphodynamic Variability of Surf Zones and Beaches: A Synthesis." *Mar. Geol.*, 56, 93-118.
- Wright, L.D., A.D. Short, and M.O. Green 1985. "Short-term changes in the morphodynamic states of beaches and surf zones: an empirical predictive model." *Mar. Geol.*, 62, 339-364.
- Yates, M.L., R.T. Guza, R. Gutierrez, and R. Seymour 2008. "A Technique for Eliminating Water Returns from Lidar Beach Elevation Surveys." *J. Atmos. Oc. Tech.*, 25(9), 1671-1682.
- Young, A.P. and S.A. Ashford 2006. "Application of Airborne LIDAR for Seacliff Volumetric Change and Beach-Sediment Budget Contributions." *J. Coastal Res.*, 22(2), 307-318.